

# PORTABLE DAVIT SYSTEM

Complete  
Resource Guide



MADE IN



THE USA



**Portable Davit System- Portable Base**

**3-Piece Portable Base- 60" max width**

Designed for manholes & other confined spaces where a portable base is needed.

**Specs**

Weight Capacity-  
130-310 lbs ANSI

Capacity- 1 entrant only, 310 lb.  
max

Item weight- 162.75 lbs.

Hardware Material- Powder  
coated aluminum, plated alloy  
steel

Lifeline- Galvanized steel wire  
rope

Standards- OSHA 1926.502  
ANSI 1910.66

**Components**

**PD1-** Davit Mast Assembly

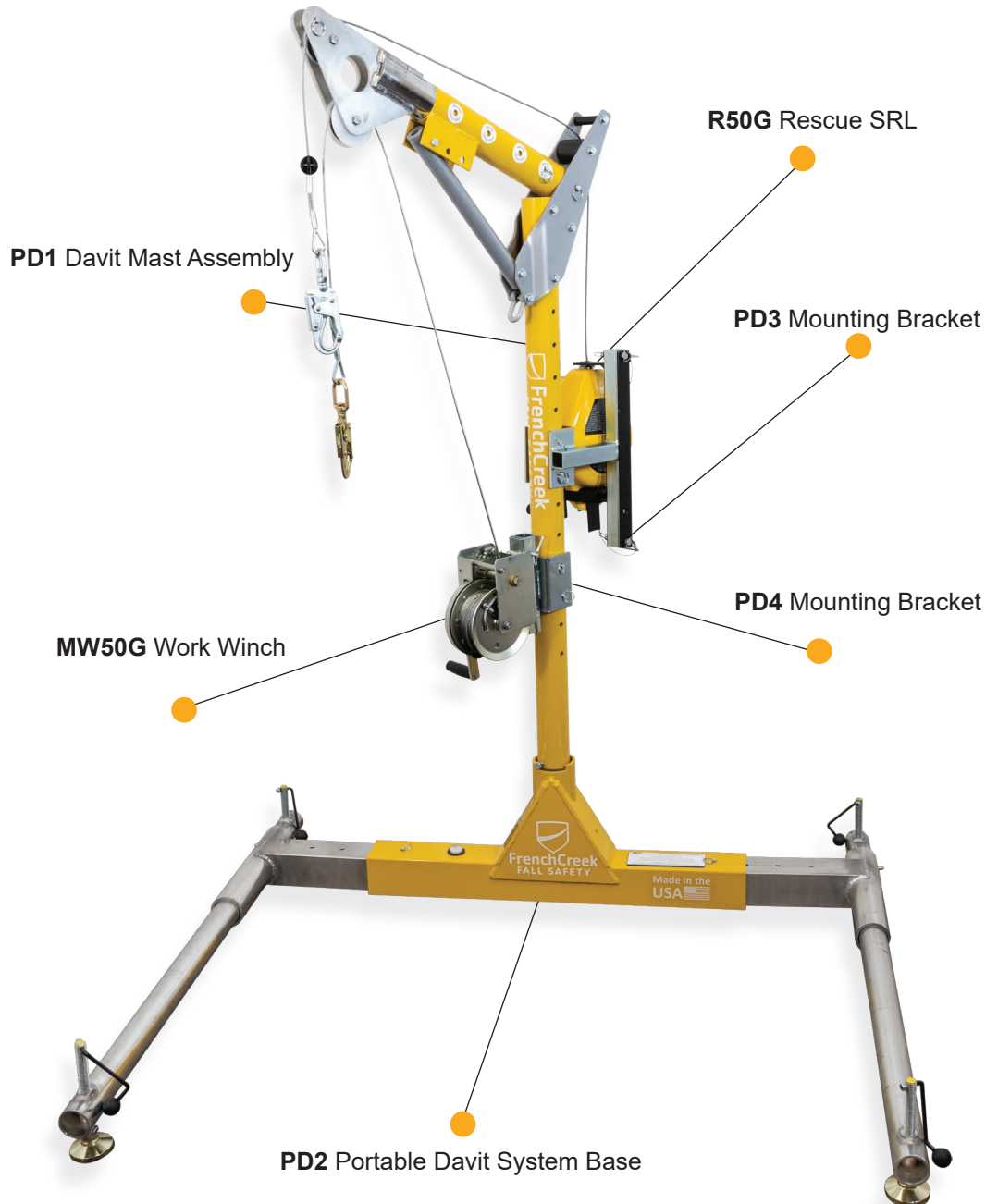
**PD2-** Portable Davit Base

**PD3-** R50G Mounting Bracket

**PD4-** MW50G Mounting Bracket

**R50G-** Rescue SRL

**MW50G-** Work Winch



**MADE IN**



**THE USA**

## Portable Davit System- Portable Base

### Ordering Information

#### PD1 Davit Mast Assembly 12"-30" offset reach



#### PD1

Davit mast assembly with telescoping adjustability from 12"-30". Includes attachment points for mechanical units. Used in conjunction with FrenchCreek Portable Davit system bases. Item weight 32.75 lbs.

#### PD2 Portable Davit System Base "36-60" adjustable base width



#### PD2

3-piece portable davit system base adjust from 36"-60". For temporary application. Includes bullseye level, tool free height adjustment. Base material: powder-coated aluminum & stainless steel. Item weight 58 lbs.

#### PD3 Mounting Bracket Attaches R50G Rescue SRL



#### PD3

Used to attach R50G Rescue SRL to PD1 Davit Mast Assembly. Attaches with locking pins. Material: plated alloy steel. Item weight: 7.2 lbs.

#### PD4 Mounting Bracket Attaches MW50G Work Winch



#### PD4

Used to attach MW50G Work Winch to PD1 Davit Mast Assembly. Attaches with locking pins. Material: plated alloy steel. Item weight: 4.8 lbs.

#### R50G Rescue SRL ANSI Class SRL-R 3-way unit, 50' length



#### R50G

50' rescue SRL with raising/lowering capability. Mounts to PD1 Davit Mast Assembly using PD3 Mounting Bracket. Includes dual inertia braking system, pulleys & carabiner, load indicating snaphook. Three lifeline options: galvanized steel, stainless steel, technora rope. Aluminum cast housing. Item weight: 35 lbs.

#### MW50G Work Winch 50' length



#### MW50G

Offers raising and lowering capabilities with a friction brake that prevents the unit from free-wheeling when under a load. Mounts to PD1 Davit Mast Assembly using PD4 Mounting Bracket. Includes pulleys, carabiner and swivel snaphook. Three lifeline options: galvanized steel, stainless steel, technora rope. Aluminum cast housing. Item weight: 25 lbs.

**Portable Davit System- Core Mount Sleeve**

**Core Mount Sleeve Base- 9" deep sleeve**

Ideally suited for recurrent access locations where mast can be easily moved.

**Specs**

Weight Capacity-  
130-310 lbs. ANSI

Capacity- 1 entrant only, 310 lb.  
max

Item weight- 114 lbs.

Hardware Material- Powder  
coated aluminum, plated alloy  
steel

Lifeline- Galvanized steel wire  
rope

Standards- OSHA 1926.502  
ANSI 1910.66

**Components**

**PD1-** Davit Mast Assembly

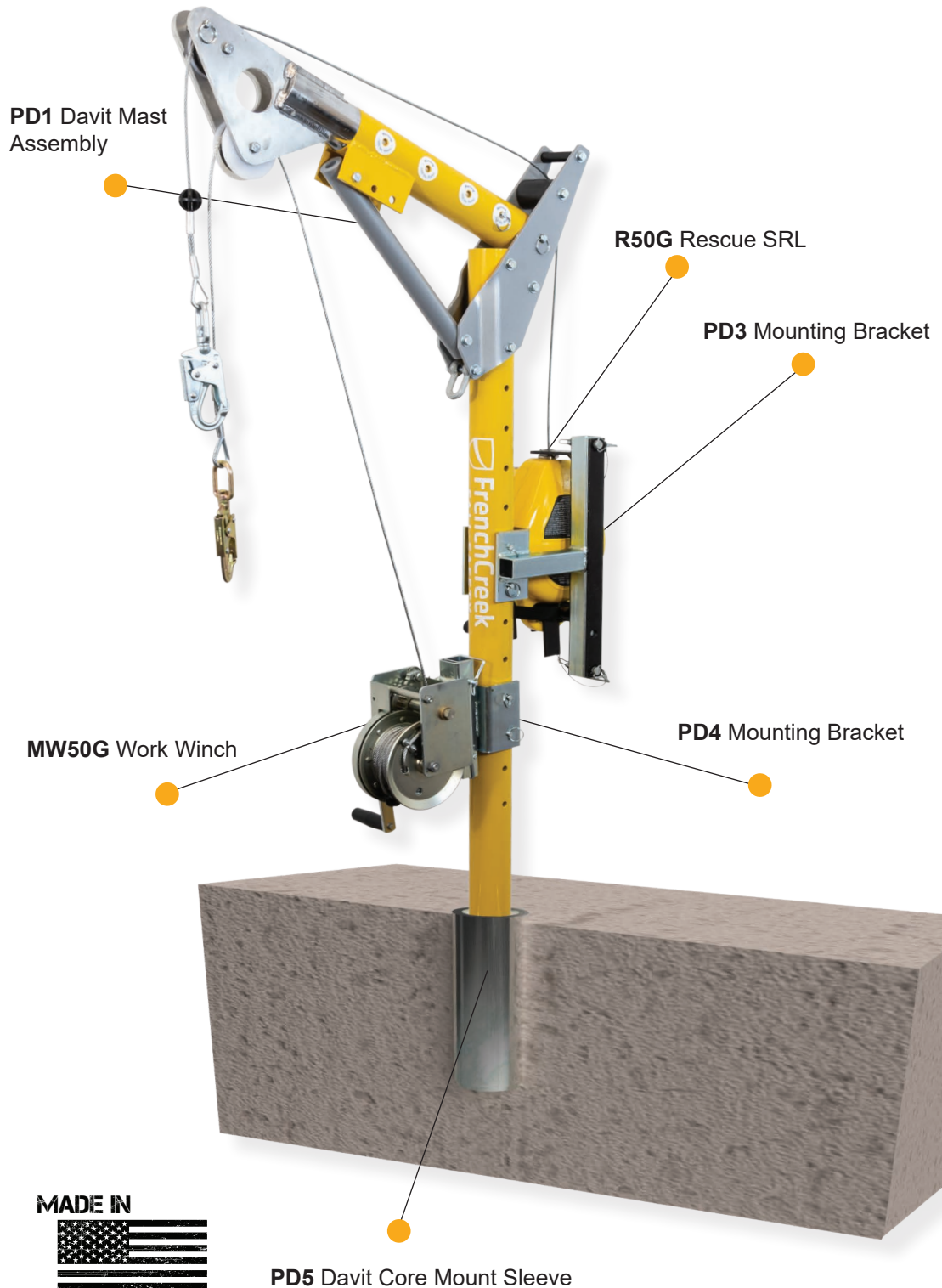
**PD5-** Davit Core Mount Sleeve

**PD3-** R50G Mounting Bracket

**PD4-** MW50G Mounting Bracket

**R50G-** Rescue SRL

**MW50G-** Work Winch



PD5 Davit Core Mount Sleeve



## Portable Davit System- Core Mount Sleeve

### Ordering Information

#### PD1 Davit Mast Assembly

12"-30" offset reach



#### PD1

Davit mast assembly with telescoping adjustability from 12"-30". Includes attachment points for mechanical units. Used in conjunction with FrenchCreek Portable Davit system bases. Item weight 32.75 lbs.

#### PD5 Core Mount Sleeve Base

Fits 4" (0.10m) diameter core hole



#### PD5

Designed for slip-in installation sleeve fits 4" diameter core hole. Sleeve 9" deep with PVC insert. Allows for 360° rotation of PD1 Davit Mast Assembly. Item weight: 9.7 lbs.

#### PD3 Mounting Bracket

Attaches R50G Rescue SRL



#### PD3

Used to attach R50G Rescue SRL to PD1 Davit Mast Assembly. Attaches with locking pins. Material: plated alloy steel. Item weight: 7.2 lbs.

#### PD4 Mounting Bracket

Attaches MW50G Work Winch



#### PD4

Used to attach MW50G Work Winch to PD1 Davit Mast Assembly. Attaches with locking pins. Material: plated alloy steel. Item weight: 4.8 lbs.

#### R50G Rescue SRL

ANSI Class SRL-R  
3-way unit, 50' length



#### R50G

50' rescue SRL with raising/lowering capability. Mounts to PD1 Davit Mast Assembly using PD3 Mounting Bracket. Includes dual inertia braking system, pulleys & carabiner, load indicating snaphook. Three lifeline options: galvanized steel, stainless steel, technora rope. Aluminum cast housing. Item weight: 35 lbs.

#### MW50G Work Winch

50' length



#### MW50G

Offers raising and lowering capabilities with a friction brake that prevents the unit from free-wheeling when under a load. Mounts to PD1 Davit Mast Assembly using PD4 Mounting Bracket. Includes pulleys, carabiner and swivel snaphook. Three lifeline options: galvanized steel, stainless steel, technora rope. Aluminum cast housing. Item weight: 25 lbs.

**Portable Davit System- Floor mount cast-in place base**

**Floor Mount Cast-In-Place Base- 8"x12" Plate**

Ideally suited for high traffic areas to reduce tripping hazards. Cast-in for new concrete construction.

**Specs**

Weight Capacity-  
130-310 lbs. ANSI

Capacity- 1 entrant only, 310 lb.  
max

Item weight- 127 lbs.

Hardware Material- Powder  
coated aluminum, plated alloy  
steel

Lifeline- Galvanized steel wire  
rope

Standards- OSHA 1926.502  
ANSI 1910.66

**Components**

**PD1-** Davit Mast Assembly

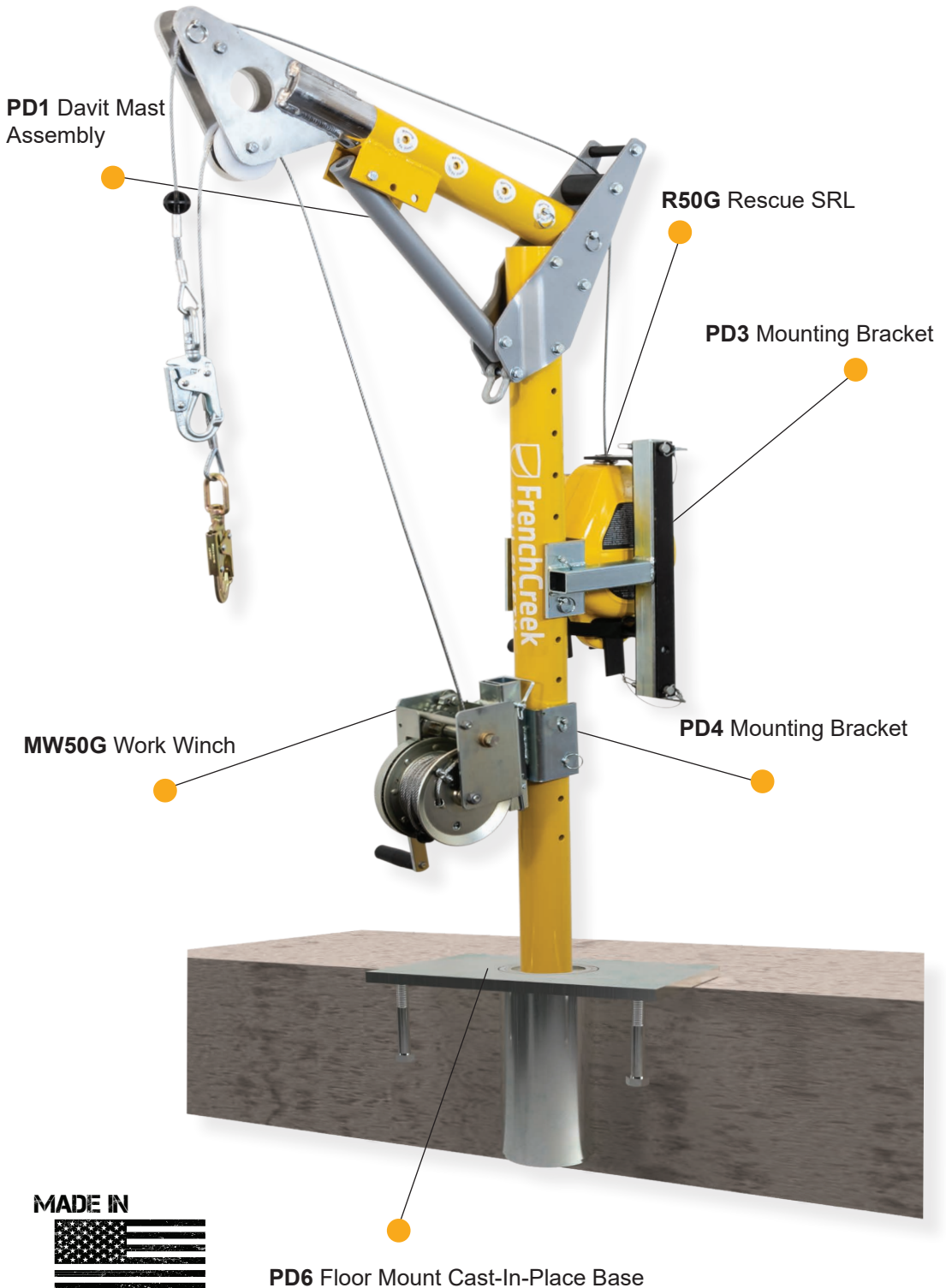
**PD6-** Floor Mount Cast-In-Place  
Base

**PD3-** R50G Mounting Bracket

**PD4-** MW50G Mounting Bracket

**R50G-** Rescue SRL

**MW50G-** Work Winch





## Portable Davit System- Floor mount cast-in place base

### Ordering Information

**PD1 Davit Mast Assembly**  
12"-30" offset reach



**PD1**

Davit mast assembly with telescoping adjustability from 12"-30". Includes attachment points for mechanical units. Used in conjunction with FrenchCreek Portable Davit system bases. Item weight 32.75 lbs.

**PD6 Floor Mount Cast-In-Place Base**  
8"x12" plate with 4" support rods



**PD6**

Cast-in design for new concrete construction installation. Allows for 360° rotation of PD1 Davit Mast Assembly. 9" deep sleeve with PVC insert. Item weight: 22 lbs.

**PD3 Mounting Bracket**  
Attaches R50G Rescue SRL



**PD3**

Used to attach R50G Rescue SRL to PD1 Davit Mast Assembly. Attaches with locking pins. Material: plated alloy steel. Item weight: 7.2 lbs.

**PD4 Mounting Bracket**  
Attaches MW50G Work Winch



**PD4**

Used to attach MW50G Work Winch to PD1 Davit Mast Assembly. Attaches with locking pins. Material: plated alloy steel. Item weight: 4.8 lbs.

**R50G Rescue SRL**  
ANSI Class SRL-R  
3-way unit, 50' length



**R50G**

50' rescue SRL with raising/lowering capability. Mounts to PD1 Davit Mast Assembly using PD3 Mounting Bracket. Includes dual inertia braking system, pulleys & carabiner, load indicating snaphook. Three lifeline options: galvanized steel, stainless steel, technora rope. Aluminum cast housing. Item weight: 35 lbs.

**MW50G Work Winch**  
50' length



**MW50G**

Offers raising and lowering capabilities with a friction brake that prevents the unit from free-wheeling when under a load. Mounts to PD1 Davit Mast Assembly using PD4 Mounting Bracket. Includes pulleys, carabiner and swivel snaphook. Three lifeline options: galvanized steel, stainless steel, technora rope. Aluminum cast housing. Item weight: 25 lbs.

**Portable Davit System- Floor Mount Sleeve Base**

**Floor Mount Sleeve Base- 9" Tall Sleeve Insert**

Designed for confined space entry and rescue when recurring access is needed for concrete or structural steel.

**Specs**

Weight Capacity-  
130-310 lbs. ANSI

Capacity- 1 entrant only, 310 lb.  
max

Item weight- 136.75 lbs.

Hardware Material- Powder  
coated aluminum, plated alloy  
steel

Lifeline- Galvanized steel wire  
rope

Standards- OSHA 1926.502  
ANSI 1910.66

**Components**

**PD1-** Davit Mast Assembly

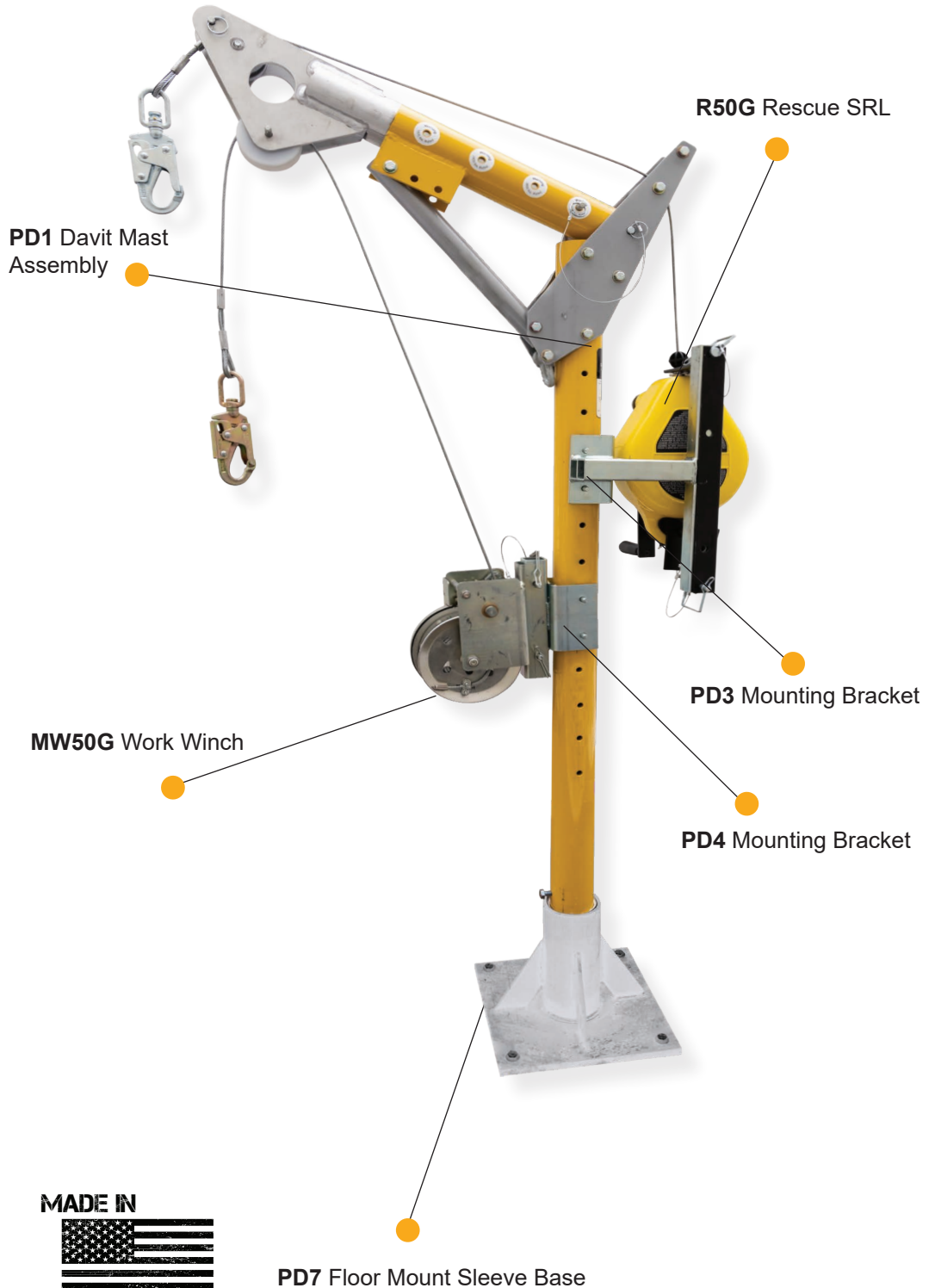
**PD7-** Floor Mount Sleeve Base

**PD3-** R50G Mounting Bracket

**PD4-** MW50G Mounting Bracket

**R50G-** Rescue SRL

**MW50G-** Work Winch





## Portable Davit System- Floor Mount Sleeve Base

### Ordering Information

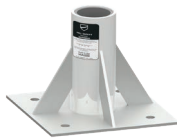
#### PD1 Davit Mast Assembly 12"-30" offset reach



#### PD1

Davit mast assembly with telescoping adjustability from 12"-30". Includes attachment points for mechanical units. Used in conjunction with FrenchCreek Portable Davit system bases. Item weight 32.75 lbs.

#### PD7 Floor Mount Sleeve Base 9" Deep Sleeve Insert



#### PD7

Bolt on design for existing steel and concrete installation. Allows for 360° rotation of PD1 Davit Mast Assembly. 9" tall sleeve with PVC insert. Item weight: 32 lbs.

#### PD3 Mounting Bracket Attaches R50G Rescue SRL



#### PD3

Used to attach R50G Rescue SRL to PD1 Davit Mast Assembly. Attaches with locking pins. Material: plated alloy steel. Item weight: 7.2 lbs.

#### PD4 Mounting Bracket Attaches MW50G Work Winch



#### PD4

Used to attach MW50G Work Winch to PD1 Davit Mast Assembly. Attaches with locking pins. Material: plated alloy steel. Item weight: 4.8 lbs.

#### R50G Rescue SRL ANSI Class SRL-R 3-way unit, 50' length



#### R50G

50' rescue SRL with raising/lowering capability. Mounts to PD1 Davit Mast Assembly using PD3 Mounting Bracket. Includes dual inertia braking system, pulleys & carabiner, load indicating snaphook. Three lifeline options: galvanized steel, stainless steel, technora rope. Aluminum cast housing. Item weight: 35 lbs.

#### MW50G Work Winch 50' length



#### MW50G

Offers raising and lowering capabilities with a friction brake that prevents the unit from free-wheeling when under a load. Mounts to PD1 Davit Mast Assembly using PD4 Mounting Bracket. Includes pulleys, carabiner and swivel snaphook. Three lifeline options: galvanized steel, stainless steel, technora rope. Aluminum cast housing. Item weight: 25 lbs.

**Portable Davit System- Wall Mount Sleeve**

**Wall Mount Sleeve Base- 9" Tall Sleeve Insert**

Designed for confined space entry and rescue for vertical concrete or steel structures. Can be bolted or welded.

**Specs**

Weight Capacity-  
130-310 lbs. ANSI

Capacity- 1 entrant only, 310 lb. max

Item weight- 117.75 lbs.

Hardware Material- Powder coated aluminum, plated alloy steel

Lifeline- Galvanized steel wire rope

Standards- OSHA 1926.502  
ANSI 1910.66

**Components**

**PD1-** Davit Mast Assembly

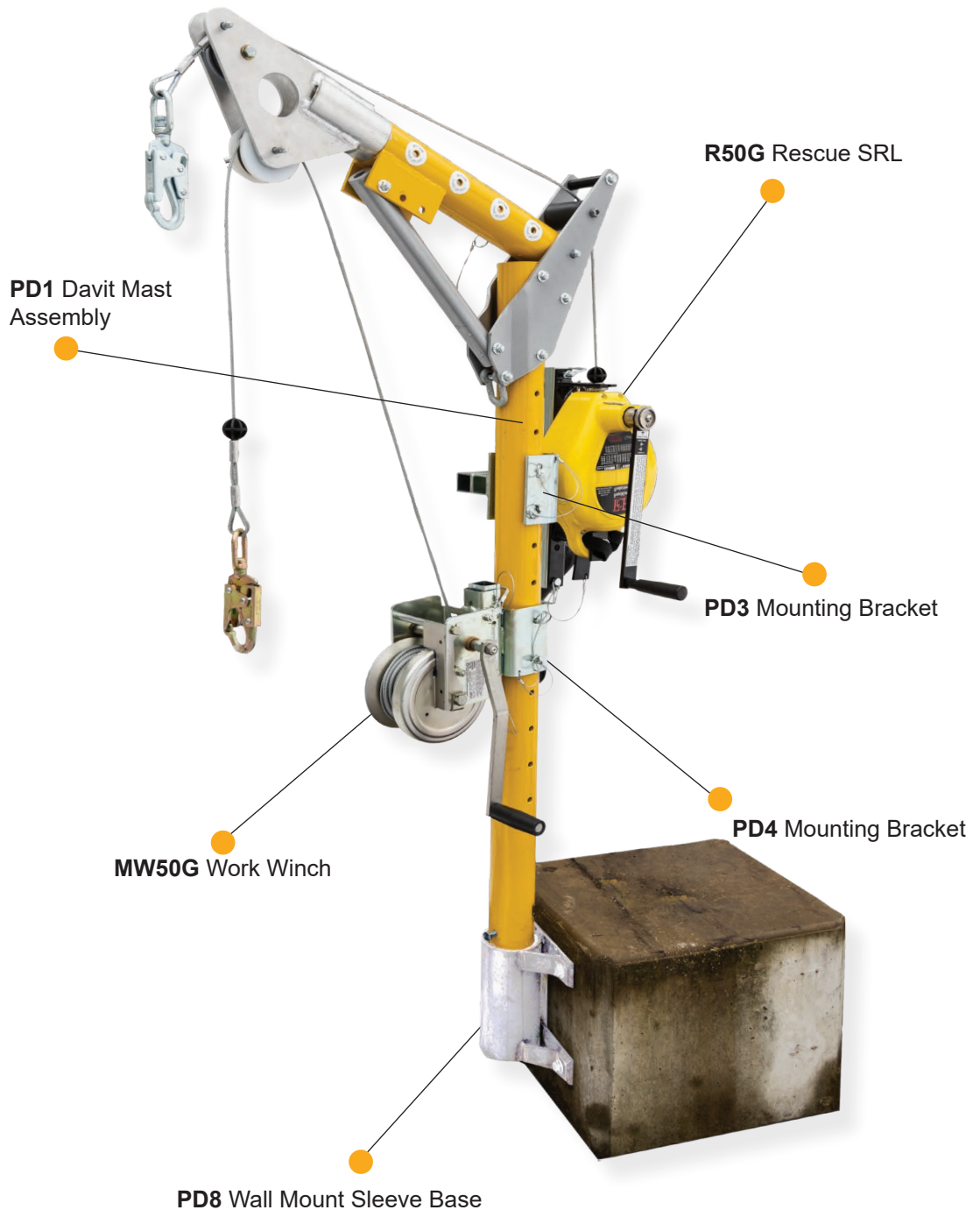
**PD8-** Wall Mount Sleeve

**PD3-** R50G Mounting Bracket

**PD4-** MW50G Mounting Bracket

**R50G-** Rescue SRL

**MW50G-** Work Winch



**MADE IN**



**THE USA**



## Portable Davit System- Wall Mount Sleeve

### Ordering Information

#### PD1 Davit Mast Assembly 12"-30" offset reach



#### PD1

Davit mast assembly with telescoping adjustability from 12"-30". Includes attachment points for mechanical units. Used in conjunction with FrenchCreek Portable Davit system bases. Item weight 32.75 lbs.

#### PD8 Wall Mount Sleeve Base 9" Deep Sleeve Insert



#### PD8

Bolt on design for existing steel and concrete vertical installation. Allows for 360° rotation of PD1 Davit Mast Assembly. 9" tall sleeve with PVC insert. Item weight: 13 lbs.

#### PD3 Mounting Bracket Attaches R50G Rescue SRL



#### PD3

Used to attach R50G Rescue SRL to PD1 Davit Mast Assembly. Attaches with locking pins. Material: plated alloy steel. Item weight: 7.2 lbs.

#### PD4 Mounting Bracket Attaches MW50G Work Winch



#### PD4

Used to attach MW50G Work Winch to PD1 Davit Mast Assembly. Attaches with locking pins. Material: plated alloy steel. Item weight: 4.8 lbs.

#### R50G Rescue SRL ANSI Class SRL-R 3-way unit, 50' length



#### R50G

50' rescue SRL with raising/lowering capability. Mounts to PD1 Davit Mast Assembly using PD3 Mounting Bracket. Includes dual inertia braking system, pulleys & carabiner, load indicating snaphook. Three lifeline options: galvanized steel, stainless steel, technora rope. Aluminum cast housing. Item weight: 35 lbs.

#### MW50G Work Winch 50' length



#### MW50G

Offers raising and lowering capabilities with a friction brake that prevents the unit from free-wheeling when under a load. Mounts to PD1 Davit Mast Assembly using PD4 Mounting Bracket. Includes pulleys, carabiner and swivel snaphook. Three lifeline options: galvanized steel, stainless steel, technora rope. Aluminum cast housing. Item weight: 25 lbs.

**Portable Davit System- Barrel Mount Davit Base**

**Barrel Mount Davit Base- 1/2" to 3-1/2" thick**

Designed for bolt on installation to existing edges, walls and other properly rated structures.

**Specs**

Weight Capacity-  
130-310 lbs. ANSI

Capacity- 1 entrant only, 310 lb.  
max

Item weight- 136.75 lbs.

Hardware Material- Powder  
coated aluminum, plated alloy  
steel

Lifeline- Galvanized steel wire  
rope

Standards- OSHA 1926.502  
ANSI 1910.66

**Components**

**PD1-** Davit Mast Assembly

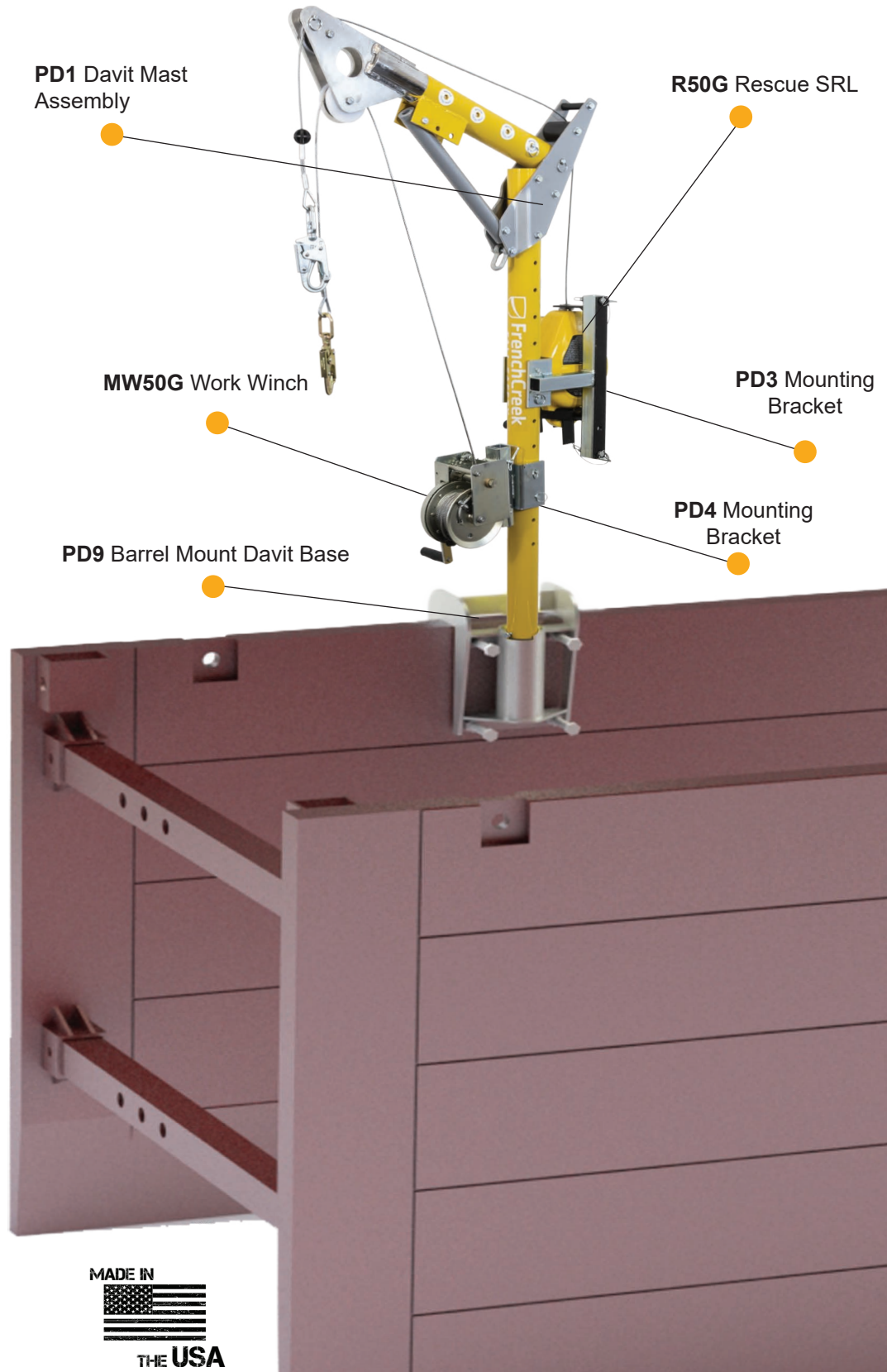
**PD9-** Barrel Mount Davit Base

**PD3-** R50G Mounting Bracket

**PD4-** MW50G Mounting Bracket

**R50G-** Rescue SRL

**MW50G-** Work Winch





## Portable Davit System- Barrel Mount Davit Base

### Ordering Information

#### PD1 Davit Mast Assembly 12"-30" offset reach



#### PD1

Davit mast assembly with telescoping adjustability from 12"-30". Includes attachment points for mechanical units. Used in conjunction with FrenchCreek Portable Davit system bases. Item weight 32.75 lbs.

#### PD9 Barrel Mount Davit Base Attaches to properly rated structures 1/2" to 3-1/2" thick.



#### PD9

Attaches to properly rated structures 1/2" to 3-1/2" thick. 4pcs. 3/4" x 5" hex head set screws for securing to structure. Zinc plated welded steel construction with PVC mast sleeve insert. 180° mast rotation. 9" tall sleeve PVC insert. Item weight 32 lbs.

#### PD3 Mounting Bracket Attaches R50G Rescue SRL



#### PD3

Used to attach R50G Rescue SRL to PD1 Davit Mast Assembly. Attaches with locking pins. Material: plated alloy steel. Item weight: 7.2 lbs.

#### PD4 Mounting Bracket Attaches MW50G Work Winch



#### PD4

Used to attach MW50G Work Winch to PD1 Davit Mast Assembly. Attaches with locking pins. Material: plated alloy steel. Item weight: 4.8 lbs.

#### R50G Rescue SRL ANSI Class SRL-R 3-way unit, 50' length



#### R50G

50' rescue SRL with raising/lowering capability. Mounts to PD1 Davit Mast Assembly using PD3 Mounting Bracket. Includes dual inertia braking system, pulleys & carabiner, load indicating snaphook. Three lifeline options: galvanized steel, stainless steel, technora rope. Aluminum cast housing. Item weight: 35 lbs.

#### MW50G Work Winch 50' length



#### MW50G

Offers raising and lowering capabilities with a friction brake that prevents the unit from free-wheeling when under a load. Mounts to PD1 Davit Mast Assembly using PD4 Mounting Bracket. Includes pulleys, carabiner and swivel snaphook. Three lifeline options: galvanized steel, stainless steel, technora rope. Aluminum cast housing. Item weight: 25 lbs.

**Portable Davit System- Hitch Mount System**

**Hitch Mount System- For Class 3 Minimum Vehicle Trailer Hitch**

Designed to be used as a portable anchorage connector. Commonly used with rescue vehicles.

**Specs**

Weight Capacity-  
130-310 lbs. ANSI

Capacity- 1 entrant only, 310 lb.  
max

Item weight- 158.75 lbs.

Hardware Material- Powder  
coated aluminum, plated alloy  
steel

Lifeline- Galvanized steel wire  
rope

Standards- OSHA 1926.502  
ANSI 1910.66

**Components**

**PD1-** Davit Mast Assembly

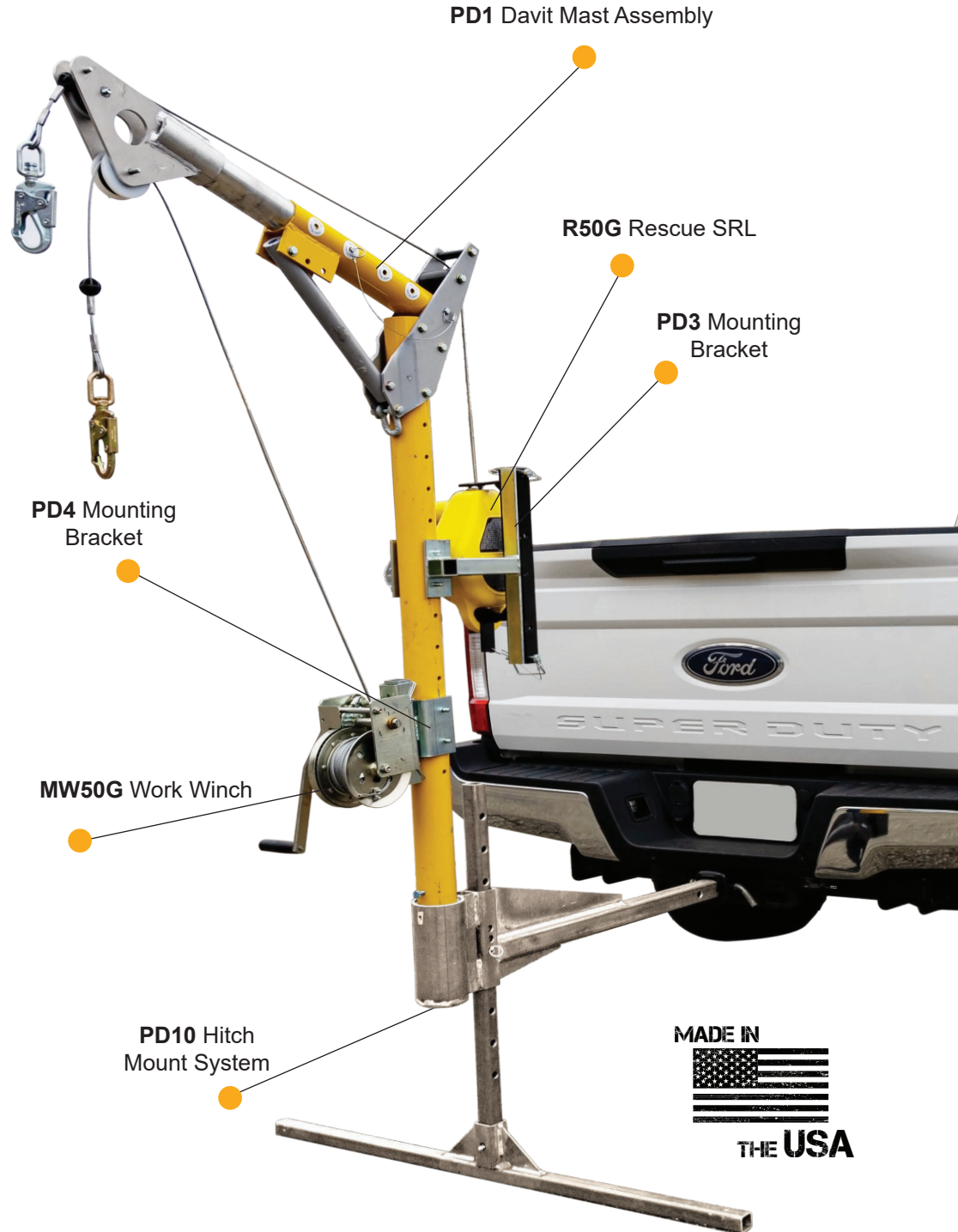
**PD10-** Hitch Mount System

**PD3-** R50G Mounting Bracket

**PD4-** MW50G Mounting Bracket

**R50G-** Rescue SRL

**MW50G-** Work Winch



## Portable Davit System- Hitch Mount System

### Ordering Information

#### PD1 Davit Mast Assembly 12"-30" offset reach



#### PD1

Davit mast assembly with telescoping adjustability from 12"-30". Includes attachment points for mechanical units. Used in conjunction with FrenchCreek Portable Davit system bases. Item weight 32.75 lbs.

#### PD10 Hitch Mount System

Installs into class 3 minimum vehicle trailer hitch.



#### PD10

Installs into class 3 minimum vehicle trailer hitch, 2" square receiver. 6"-30" height adjustment range provided in 1" increments. 9" tall plated carbon sleeve with insert. Compatible with PD1 Davit Mast Assembly. Weight 54 lbs.

#### PD3 Mounting Bracket

Attaches R50G Rescue SRL



#### PD3

Used to attach R50G Rescue SRL to PD1 Davit Mast Assembly. Attaches with locking pins. Material: plated alloy steel. Item weight: 7.2 lbs.

#### PD4 Mounting Bracket

Attaches MW50G Work Winch



#### PD4

Used to attach MW50G Work Winch to PD1 Davit Mast Assembly. Attaches with locking pins. Material: plated alloy steel. Item weight: 4.8 lbs.

#### R50G Rescue SRL

ANSI Class SRL-R  
3-way unit, 50' length



#### R50G

50' rescue SRL with raising/lowering capability. Mounts to PD1 Davit Mast Assembly using PD3 Mounting Bracket. Includes dual inertia braking system, pulleys & carabiner, load indicating snaphook. Three lifeline options: galvanized steel, stainless steel, technora rope. Aluminum cast housing. Item weight: 35 lbs.

#### MW50G Work Winch

50' length



#### MW50G

Offers raising and lowering capabilities with a friction brake that prevents the unit from free-wheeling when under a load. Mounts to PD1 Davit Mast Assembly using PD4 Mounting Bracket. Includes pulleys, carabiner and swivel snaphook. Three lifeline options: galvanized steel, stainless steel, technora rope. Aluminum cast housing. Item weight: 25 lbs.



MADE IN



THE USA

# FrenchCreek FALL SAFETY

[fcsafety.com](https://fcsafety.com)

©2022 FrenchCreek Production Inc.  
100 N. 13th St.  
Franklin, PA 16323

*Please call to locate your nearest distributor*

**877.228.9327**

**814.437.1808**

Tools shown not included.

Product descriptions and specifications  
herein may change without notice.

PDS-LIT2



*Proud Member of:*